

# Padlock Range



We take the worry out of  
protecting what's valuable to you.  
Lockwood: *no worries*<sup>®</sup>

**LOCKWOOD**

**ASSA ABLOY**

**25YEAR**

**MECHANICAL  
WARRANTY**

[www.lockweb.com.au](http://www.lockweb.com.au)

# Contents

## Value Range



**110 Series**  
Brass Case Padlocks  
page 5



**140 Series**  
Combination Padlock  
page 7



**141 Series**  
Combination Padlock  
page 9



**150 Series**  
Combination Padlock  
page 11

## High Security



**120N Series**  
Brass Case Padlocks  
with Silicone Jackets  
page 14



**130 Series**  
Stainless Steel Padlock  
page 16



**334B Series**  
High Security Brass  
Case Padlocks  
page 18



**334S Series**  
Steel Case Padlocks  
page 20



**334C Series**  
Shrouded Steel Case Padlocks  
page 22



**334M Series**  
Stainless Steel Case Padlocks  
page 24

# Contents

## Maximum Security



### 270 Series

Steel Case Padlocks

page 27



### 290 Series

Steel Case Monoblock Padlocks

page 29



### 301 Series

Steel Case Padlocks

page 31



### 356 Series

Steel Case Padlocks

page 33

## Safety Lockout



### 214 and 215 Series

Aluminium Case Padlocks

page 37



### 215P Series

Plastic Case Padlocks

page 39



### 225 Series

Zinc Case Padlock

page 41



### 312 Series

Padlocks

page 43



### 312 Series

Safety Lockout Kit Accessories

page 45



### Safety Lockout

312HASP

page 50



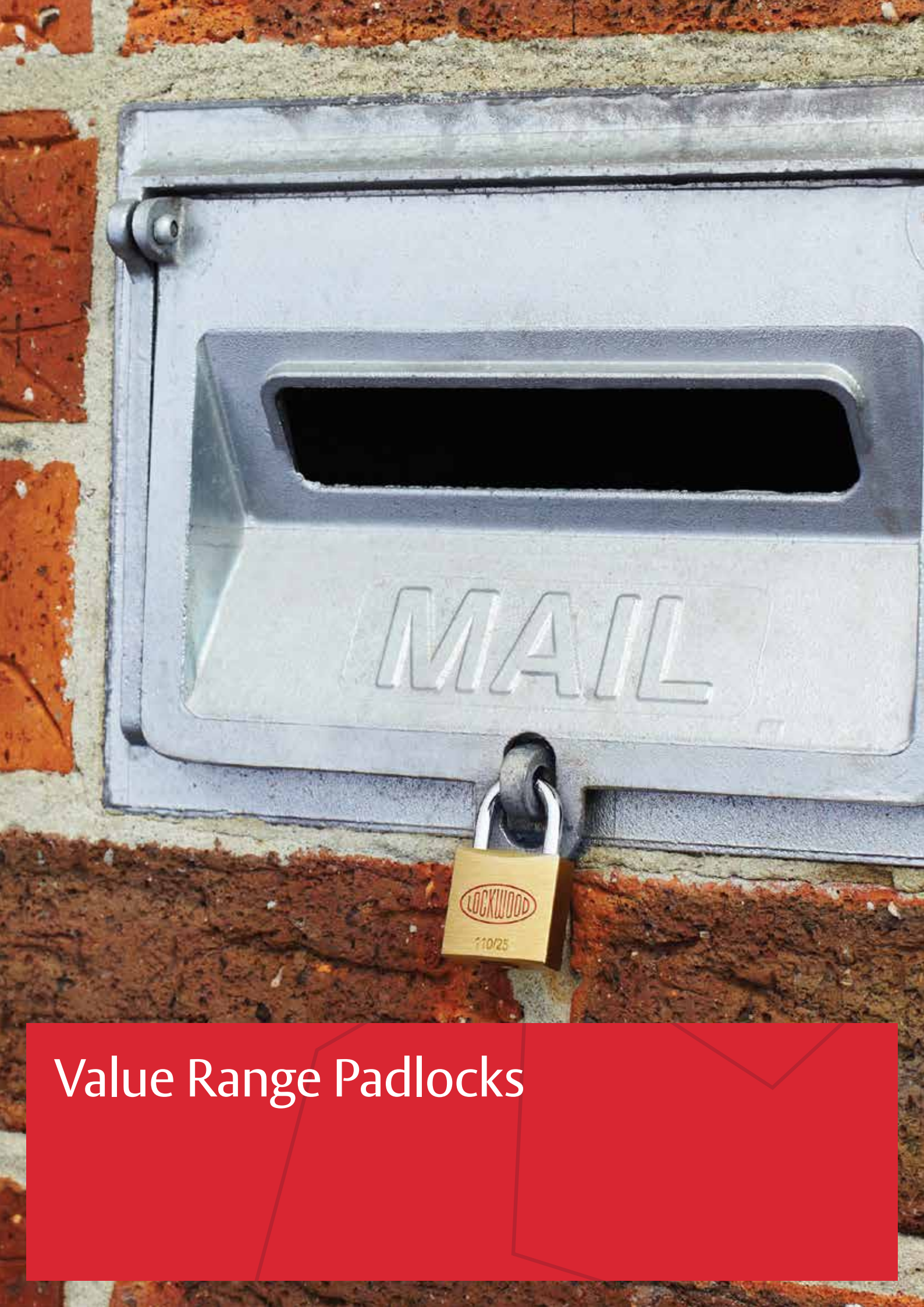
### Trailer Air Coupling Lock

page 51



### Padlock Accessories

page 54



Value Range Padlocks

# Value Range Padlocks

## 110 Series Brass Case Padlocks



The Lockwood Solid Brass 110 Series Padlocks are designed for barrier and deterrent level protection in applications such as school lockers and letter boxes.

### Features

- Pin tumbler mechanisms
- Self-latching shackle function
- Single locking on 20 and 25mm padlocks
- Double locking on 30, 35 and 40mm padlocks

### Product Details

<b>Case</b>	Solid brass case extrusion
<b>Shackles</b>	Chrome plated, hardened steel shackles.

### Standards and Compliance

#### UP TO GRADE 4

Physical Security grades are employed for padlocks. These grades are defined in part by the effective differs and key combinations. Padlocks Physical Security (SP) grade range up to Grade 4

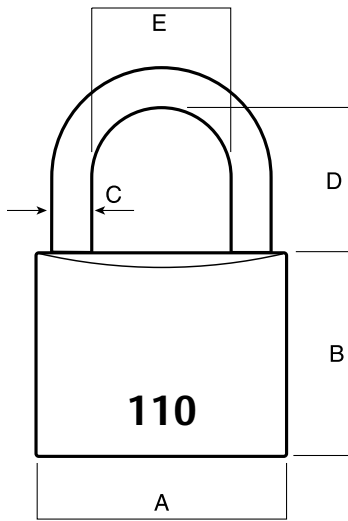


Anti-Corrosion. Corrosion Resistance Rating. Environments that are sometimes damp in the majority of rural and suburban localities, including interiors where condensation may occur

Designed and tested to the Australian Padlock Standard AS4145.4 2002 and are rated for both security and corrosion resistance.

# Value Range Padlocks

## 110 Series Brass Case Padlocks



### Specifications

Part Number	Dimensions (mm)					Physical Security Rating	Corrosion Resistance Rating
	A	B	C	D	E		
110/20/111	20	20.0	3.2	11	10	-	C2
110/25/115	25	24.5	4.0	15	13	SP1	C2
110/30/119	30	27.0	4.8	19	18	SP2	C3
110/35/121	35	29.5	5.5	21	19	SP3	C3
110/40/123	40	32.5	6.4	23	22	SP4	C3

### Available Pack Variations

Part Number	NDP	2NDP	4NDP	KA
110/20/111	•	•	•	•
110/25/115	•	•	•	
110/30/119	•	•		
110/35/121	•			
110/40/123	•	•		

# Value Range Padlocks

## 140 Series Combination Padlock



The Lockwood 140 Series Padlock is a 50mm stainless steel dial type combination padlock designed as basic protection for barrier and deterrent applications such as school lockers.

### Features

- Thousands of possible combinations
- Steel latch mechanism
- Positive three digit dialling gives maximum combinations
- Anti manipulation feature standard
- Automatic combination scramble when shackle is closed to prevent unauthorised reopening of padlock
- Available in NDP (Display Pack), RC (Random Codes) and AC (Alike Codes)

### Product Details

<b>Case</b>	Dual layer polished stainless steel body
<b>Shackle</b>	Case hardened 8mm diameter steel shackle

### Standards and Compliance

#### SP3

Physical Security grades are employed for padlocks. These grades are defined in part by the effective differs and key combinations. Padlocks Physical Security (SP) grade 3

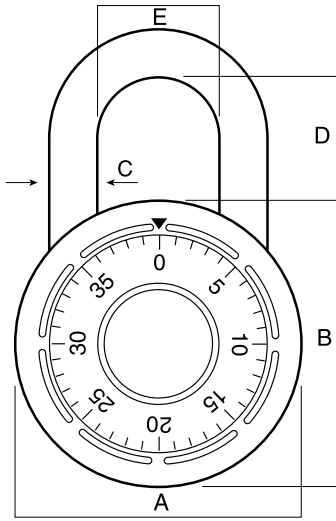


Anti-Corrosion. Corrosion Resistance Rating C3. Environments that are sometimes damp in the majority of rural and suburban localities, including interiors where condensation may occur

Designed and tested to the Australian Padlock Standard AS4145.4 2002 and are rated for both security and corrosion resistance.

# Value Range Padlocks

## 140 Series Combination Padlock



### Specifications

Part Number	Dimensions (mm)					Physical Security Rating	Corrosion Resistance Rating
	A	B	C	D	E		
140/50/122	50	50	8	22	21	SP3	C3

# Value Range Padlocks

## 141 Series Combination Padlock



The Lockwood 141 Series Padlock is a 50mm stainless steel dial type combination padlock with key override. Designed as basic protection for barrier and deterrent applications such as school lockers where access by authorised staff is required.

### Features

- Key override for immediate access by authorised staff
- Steel latch mechanism
- Brass 4 pin tumbler mechanism
- Brightly coloured dial for easy identification
- Positive three digit dialling gives maximum combinations
- Anti manipulation feature standard
- Automatic combination scramble when shackle is closed to prevent unauthorised reopening of padlock
- Keying and system management using Lockwood ProMaster software
- Combination code charts supplied with every order
- Available in RCKA (Random Codes, Keyed Alike) only

### Product Details

<b>Case</b>	Dual layer polished stainless steel body
<b>Shackles</b>	Case hardened 8mm diameter steel shackle

**Note:** Minimum order quantity and minimum pack size 50

### Standards and Compliance

#### SP3

Physical Security grades are employed for padlocks. These grades are defined in part by the effective differs and key combinations. Padlocks Physical Security (SP) grade 3

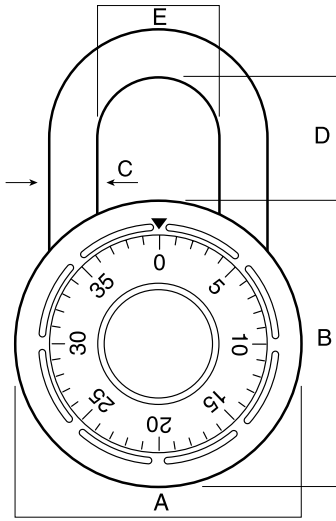


Anti-Corrosion. Corrosion Resistance Rating C3. Environments that are sometimes damp in the majority of rural and suburban localities, including interiors where condensation may occur

Designed and tested to the Australian Padlock Standard AS4145.4 2002 and are rated for both security and corrosion resistance.

# Value Range Padlocks

## 141 Series Combination Padlock



### Specifications

Part Number	Dimensions (mm)					Physical Security Rating	Corrosion Resistance Rating
	A	B	C	D	E		
141/50/122	50	50	8	22	21	SP3	C3

# Value Range Padlocks

## 150 Series Combination Padlock



The Lockwood 150 Series Padlocks are brass case combination padlocks designed as basic protection for barrier and deterrent applications such as luggage and sports bags.

### Features

- 1,000 resettable combinations

### Product Details

<b>Case</b>	Solid brass case and wheels
-------------	-----------------------------

**Note:** Available in NDP (Display Pack) only

### Standards and Compliance

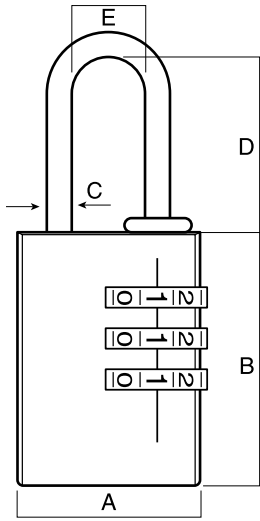


Anti-Corrosion. Corrosion Resistance Rating C2. Environments that are sometimes damp in the majority of rural and suburban localities, including interiors where condensation may occur

Designed and tested to the Australian Padlock Standard AS4145.4 2002 and are rated for both security and corrosion resistance.

# Value Range Padlocks

## 150 Series Combination Padlock



### Specifications

Part Number	Dimensions (mm)					Physical Security Rating	Corrosion Resistance Rating
	A	B	C	D	E		
150/25/118/NDP	25	31.5	3.2	22	10	-	C2
150/30/125/NDP	31	40.0	4.8	25	14	-	C2
150/40/130/NDP	40	48.0	6.0	30	20	-	C2



# High Security Padlocks

# High Security Padlocks

## 120N Series Brass Case Padlocks with Silicone Jackets



The 120N Series Padlock range includes 14 different models, with single, twin and quad packs (keyed alike), as well as extended shackle lengths for selected models.

All padlocks in this range come complete with jackets made from a tough silicone material which is weather resistant and UV stable to resist the impact of harsh environments.

The jackets also provide protection for both the padlock and the object to which it is attached.

The 120N padlocks are suitable for general purpose applications providing for a broad range of applications.

### Features

- Pin tumbler locking
- Self-latching shackle function
- Multipacks (keyed alike) on some 30mm and 40mm variants

### Product Details

<b>Case</b>	Heavy duty solid brass bodies
<b>Jacket</b>	Protective silicone jackets. Individual jacket colours for each model
<b>Shackles</b>	Double locking shackle mechanism. Heavy duty chrome plated hardened steel shackles. Extended shackles on some 30mm and 40mm models

### Standards and Compliance

#### SP2-6

Physical Security grades are employed for padlocks. These grades are defined in part by the effective differs and key combinations. Padlocks Physical Security (SP) grade range from 2-6

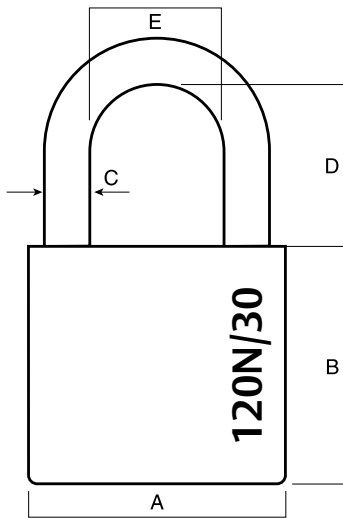


Anti-Corrosion. Corrosion Resistance Rating C3. Environments that are sometimes damp in the majority of rural and suburban localities, including interiors where condensation may occur

Designed and tested to the Australian Padlock Standard AS4145.4 2002 and are rated for both security and corrosion resistance.

# High Security Padlocks

## 120N Series Brass Case Padlocks with Silicone Jackets



### Specifications

Part Number	Dimensions (mm)					Physical Security Rating	Corrosion Resistance Rating
	A	B	C	D	E		
120N/30/118	30	30	5.0	18	17.0	SP3	C3
120N/30/150	30	30	5.0	50	17.0	SP2	C3
120N/30/180	30	30	5.0	80	17.0	SP2	C3
120N/35/123	35	32	6.4	23	18.0	SP4	C3
120N/40/125*	40	37	7.1	25	21.0	SP5	C3
120N/40/150	40	37	7.1	50	21.0	SP4	C3
120N/40/180	40	37	7.1	80	21.0	SP4	C3
120N/45/127	45	41	8.0	27	22.5	SP6	C3
120N/50/132*	50	46	9.5	32	25.5	SP6	C3
120N/60/135	60	50	10.0	35	35.0	SP6	C3

### Available Pack Variations

Part Number	DP	2DP	4DP
120N/30/118	•	•	•
120N/30/150	•	•	•
120N/30/180	•	•	
120N/35/123	•		
120N/40/125*	•	•	•
120N/40/150	•		
120N/40/180	•		
120N/45/127	•		
120N/50/132*	•		
120N/60/135	•		

**Please note:** The extended shackle reduces the shackle resistance to twisting which reduces the overall security rating.

# High Security Padlocks

## 130 Series Stainless Steel Padlock



The Lockwood 130 Series Padlock is a 70mm cylindrical stainless steel padlock designed for high security and high corrosion resistance applications.

### Features

- Non-corroding internal components
- Pin tumbler mechanism
- Key retention in the unlocked position

### Product Details

<b>Case</b>	Precision seam welded stainless steel case with drain holes
<b>Shackle</b>	Enclosed 9.5mm hardened alloy steel shackle

### Standards and Compliance

#### SP7

Physical Security grades are employed for padlocks. These grades are defined in part by the effective differs and key combinations. Padlocks Physical Security (SP) grade 7

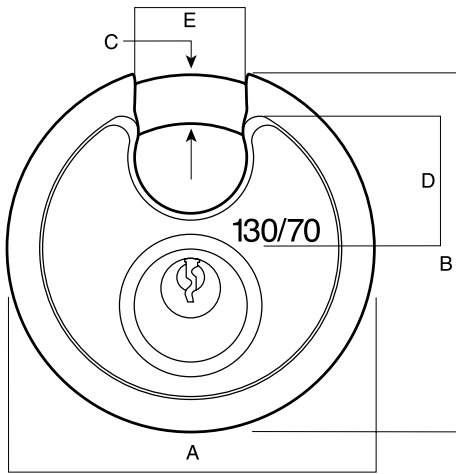


Anti-Corrosion. Corrosion Resistance Rating C4. Environments that are sometimes damp in the majority of rural and suburban localities, including interiors where condensation may occur

Designed and tested to the Australian Padlock Standard AS4145.4 2002 and are rated for both security and corrosion resistance.

# High Security Padlocks

## 130 Series Stainless Steel Padlock



### Specifications

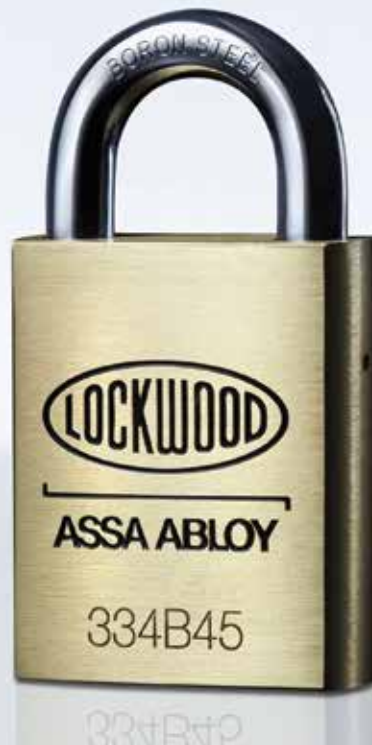
Part Number	Dimensions (mm)					Physical Security Rating	Corrosion Resistance Rating
	A	B	C	D	E		
130/70/125	70	67	9.5	16.5	20	SP7	C4

### Available Pack Variations

Part Number	NDP	KD	KA
130/70/125	•	•	•

# High Security Padlocks

## 334B Series Brass Case Padlocks



The Lockwood 334 Series Brass Case Padlock range features shackles suitable for commercial and industrial high security and high corrosion applications.

### Features

- Double ball locking
- Stainless steel shackle models
- Standard as latching function
- Can be converted to deadlocking (key retained) by simply relocating the cam plate pin in the cylinder assembly

### Product Details

<b>Case</b>	Heavy duty, solid brass case extrusion
<b>Cylinders</b>	334 top loaded cylinders are rekeyable in standard 5 pin with 6 pin capability (nickel silver keys with 6 pin padlocks). 334 cylinders are preloaded with one length top pins and stainless steel pin springs using a Lockwood 570 barrel.
<b>Shackles</b>	High corrosion resistant 8.7mm boron steel rapid change shackle. Rapid change function allows the release of the shackle by turning the key and depressing the pin. Extended shackle models

**Note:** Custom marking is available. Pricing and availability on application.

### Standards and Compliance

#### SP5-7

Physical Security grades are employed for padlocks. These grades are defined in part by the effective differs and key combinations. Padlocks Physical Security (SP) grade range from 5-7

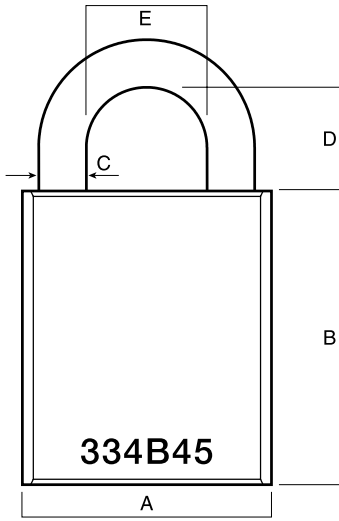


Anti-Corrosion. Corrosion Resistance Rating C4. Environments that are sometimes damp in the majority of rural and suburban localities, including interiors where condensation may occur

Designed and tested to the Australian Padlock Standard AS4145.4 2002 and are rated for both security and corrosion resistance.

# High Security Padlocks

## 334B Series Brass Case Padlocks



### Specifications

#### Dimensions (mm)

Part Number	A	B	C	D	E	Physical Security Rating	Corrosion Resistance Rating
334B45/119	45	55	8.7	19	22	SP7	C4
334B45/125	45	55	8.7	25	22	SP6	C4
334B45/138	45	55	8.7	38	22	SP6	C4
334B45/148	45	55	8.7	48	22	SP6	C4
334B45/190	45	55	8.7	90	22	SP5	C4

### Available Pack Variations

Part Number	NDP	RKA	BK	5KA	5KD	6KA	6KD	6MK
334B45			•	•	•	•	•	•
334B45/119	•	•	•	•	•	•	•	•
334B45/125			•	•	•	•	•	•
334B45/138	•			•	•	•	•	•
334B45/148	•			•	•	•	•	•
334B45/190	•			•	•	•	•	•

# High Security Padlocks

## 334 Series Steel Case Padlocks



The Lockwood 334 Steel Series Padlock range features shackles suitable for commercial and industrial high security and high corrosion applications offering added protection against attack.

### Features

- Double ball locking
- Standard as latching function
- Can be converted to deadlocking (key retained) by simply relocating the cam plate pin in the cylinder assembly

### Product Details

<b>Case</b>	Heavy duty, solid steel case
<b>Cylinders</b>	334 top loaded cylinders are rekeyable in standard 5 pin with 6 pin capability (nickel silver keys with 6 pin padlocks). 334 cylinders are preloaded with one length top pins and stainless steel pin springs using a Lockwood 570 barrel.
<b>Shackles</b>	High corrosion resistant 8.7mm chrome molybdenum steel alloy shackle. Extended shackle models

**Note:** Custom marking is available. Pricing and availability on application.

### Standards and Compliance

#### SP6-8

Physical Security grades are employed for padlocks. These grades are defined in part by the effective differs and key combinations. Padlocks Physical Security (SP) grade range from 6-8

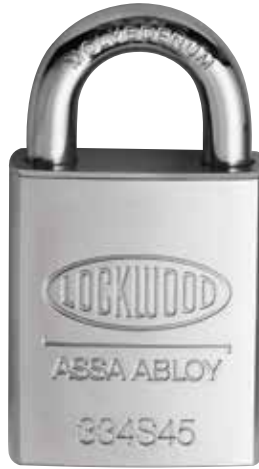
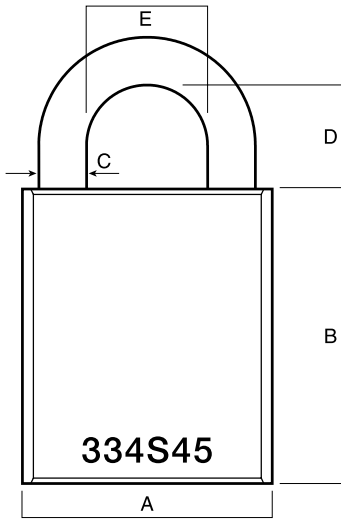


Anti-Corrosion. Corrosion Resistance Rating C4. Environments that are sometimes damp in the majority of rural and suburban localities, including interiors where condensation may occur

Designed and tested to the Australian Padlock Standard AS4145.4 2002 and are rated for both security and corrosion resistance.

# High Security Padlocks

## 334 Series Steel Case Padlocks



### Specifications

#### Dimensions (mm)

Part Number	A	B	C	D	E	Physical Security Rating	Corrosion Resistance Rating
334S45/519	45	55	8.7	19	22	SP8	C4
334B45/138	45	55	8.7	38	22	SP7	C4
334B45/148	45	55	8.7	48	22	SP7	C4
334B45/190	45	55	8.7	90	22	SP6	C4

### Available Pack Variations

Part Number	NDP	BK	5KA	5KD	6KA	6KD	6KA	6KD	6MK
334S45		•	•	•	•	•	•	•	•
334S45/519		•	•	•	•	•	•	•	•
334S45/538	•		•	•	•	•	•	•	•
334S45/548			•	•	•	•	•	•	•
334S45/590			•	•	•	•	•	•	•

# High Security Padlocks

## 334C Series Shrouded Steel Case Padlocks



The Lockwood 334 Steel Series Padlock features shackles suitable for commercial and industrial high security and high corrosion applications offering added protection against attack.

### Features

- Double ball locking
- Standard as latching function
- Can be converted to deadlocking (key retained) by simply relocating the cam plate pin in the cylinder assembly

### Product Details

<b>Case</b>	Heavy duty, solid steel case with shackle shroud
<b>Cylinders</b>	334 top loaded cylinders are rekeyable in standard 5 pin with 6 pin capability (nickel silver keys with 6 pin padlocks). 334 cylinders are preloaded with one length top pins, stainless steel pin springs using a Lockwood 570 barrel
<b>Shackles</b>	High corrosion resistant 8.7mm chrome molybdenum steel alloy shackle. Stainless steel shackle models. Extended shackle models

**Note:** Custom marking is available. Pricing and availability on application.

### Standards and Compliance

#### SP8

Physical Security grades are employed for padlocks. These grades are defined in part by the effective differs and key combinations. Padlocks Physical Security (SP) grade 8

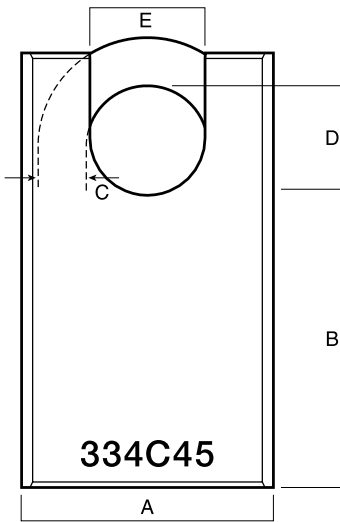


Anti-Corrosion. Corrosion Resistance Rating C4. Environments that are sometimes damp in the majority of rural and suburban localities, including interiors where condensation may occur

Designed and tested to the Australian Padlock Standard AS4145.4 2002 and are rated for both security and corrosion resistance.

# High Security Padlocks

## 334C Series Shrouded Steel Case Padlocks



### Specifications

Part Number	Dimensions (mm)					Physical Security Rating	Corrosion Resistance Rating
	A	B	C	D	E		
334C45/519	45	79	8.7	19	19	SP8	C4

### Available Pack Variations

Part Number	NDP	BK	5KA	5KD	6KA	6KD	6MK
334S45		•					
334C45/519	•	•	•	•	•	•	•

# High Security Padlocks

## 334M Series Stainless Steel Case Padlocks



The Lockwood 334 Series Stainless Steel Padlock range features stainless steel shackles suitable for commercial and industrial high security and high corrosion marine applications.

### Features

- Double ball locking
- Standard as latching function
- Can be converted to deadlocking (key retained) by simply relocating the cam plate pin in the cylinder assembly

### Product Details

<b>Case</b>	Heavy duty, solid stainless steel case
<b>Cylinders</b>	334 top loaded stainless steel cylinders are rekeyable in standard 5 pin with 6 pin capability (nickel silver keys with 6 pin padlocks). 334 cylinders are preloaded with one length top pins and stainless steel pin springs using a Lockwood 570 barrel.
<b>Shackles</b>	High corrosion resistant 8.7mm stainless steel shackle. Extended shackle models

**Note:** Custom marking is available. Pricing and availability on application.

### Standards and Compliance

#### SP5-7

Physical Security grades are employed for padlocks. These grades are defined in part by the effective differs and key combinations. Padlocks Physical Security (SP) grade range from 5-7

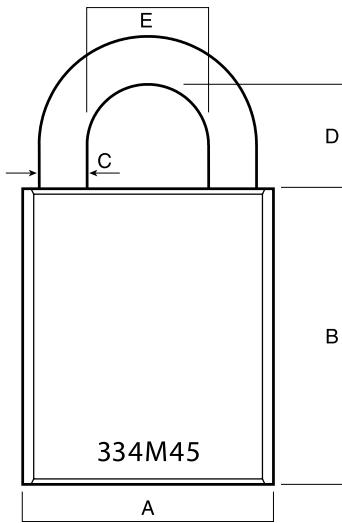


Anti-Corrosion. Corrosion Resistance Rating C5. Environments that are sometimes damp in the majority of rural and suburban localities, including interiors where condensation may occur

Designed and tested to the Australian Padlock Standard AS4145.4 2002 and are rated for both security and corrosion resistance.

# High Security Padlocks

## 334M Series Stainless Steel Case Padlocks



### Specifications

Part Number	Dimensions (mm)					Physical Security Rating	Corrosion Resistance Rating
	A	B	C	D	E		
334M45/619	45	55	8.7	19	22	SP7	C5
334M45/638	45	55	8.7	38	22	SP6	C5
334M45/648	45	55	8.7	48	22	SP6	C5
334M45/690	45	55	8.7	90	22	SP5	C5

### Available Pack Variations

Part Number	NDP	BK	5KA	5KD	6KA	6KD	6MK
334M45		•	•	•	•	•	•
334M45/619	•	•	•	•	•	•	•
334M45/638		•	•	•	•	•	•
334M45/648		•	•	•	•	•	•
334M45/690		•	•	•	•	•	•

DANGER!!!!!!  
ALIVE

ACCESS TO AUTHORIZED  
PERSONNEL ONLY



Maximum Security Padlocks

# Maximum Security Padlocks

## 270 Series Steel Case Padlocks



The Lockwood 270 Series Steel Padlock features a high strength steel shackle designed for maximum security and high corrosion resistance including commercial and industrial applications.

### Features

- Deadlocking double ball locking
- Standard as deadlocking (key retained) function

### Product Details

<b>Case</b>	Heavy duty, solid steel case
<b>Cylinders</b>	270 top loaded cylinders are rekeyable in standard 5 pin with 6 pin capability (nickel silver keys with 6 pin padlocks). 270 cylinders are preloaded with one length top pins and stainless steel pin springs using a Lockwood 570 barrel.
<b>Shackles</b>	Tough high corrosion resistant 14mm chrome molybdenum steel alloy shackle

**Note:** Custom marking is available. Pricing and availability on application.

### Standards and Compliance

#### SP9

Physical Security grades are employed for padlocks. These grades are defined in part by the effective differs and key combinations. Padlocks Physical Security (SP) grade 9

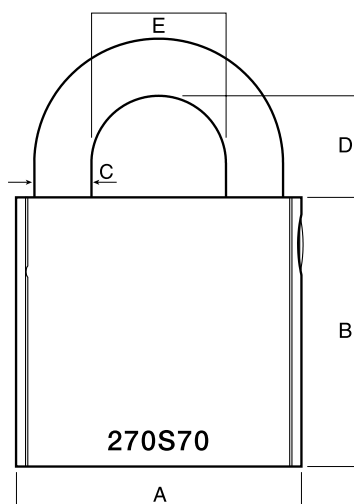


Anti-Corrosion. Corrosion Resistance Rating C4. Environments that are sometimes damp in the majority of rural and suburban localities, including interiors where condensation may occur

Designed and tested to the Australian Padlock Standard AS4145.4 2002 and are rated for both security and corrosion resistance.

# Maximum Security Padlocks

## 270 Series Steel Case Padlocks



### Specifications

Part Number	Dimensions (mm)					Physical Security Rating	Corrosion Resistance Rating
	A	B	C	D	E		
270S70/125	70	66	14	25	33	SP9	C4

### Available Pack Variations

Part Number	BK	5KA	5KD	6KA	6KD	6MK	D5KA	D5KD	D6KA	D6KD	D6MK	NDP
270S70/125	•	•	•	•	•	•	•	•	•	•	•	•

# Maximum Security Padlocks

## 290 Series Steel Case Monoblock Padlocks



The Lockwood 290 Series Steel Padlock features a high strength steel shackle designed for maximum security and high corrosion resistance including commercial and industrial applications.

### Features

- Standard as deadlocking function

### Product Details

<b>Case</b>	Heavy duty, solid steel case
<b>Cylinders</b>	290 top loaded cylinders are rekeyable in standard 5 pin with 6 pin capability (nickel silver keys with 6 pin padlocks). 290 cylinders are preloaded with one length top pins and stainless steel pin springs using a Lockwood 570 barrel.
<b>Shackles</b>	Tough high corrosion resistant 14.5mm steel alloy shackle

### Standards and Compliance

#### SP10

Physical Security grades are employed for padlocks. These grades are defined in part by the effective differs and key combinations. Padlocks Physical Security (SP) grade 10

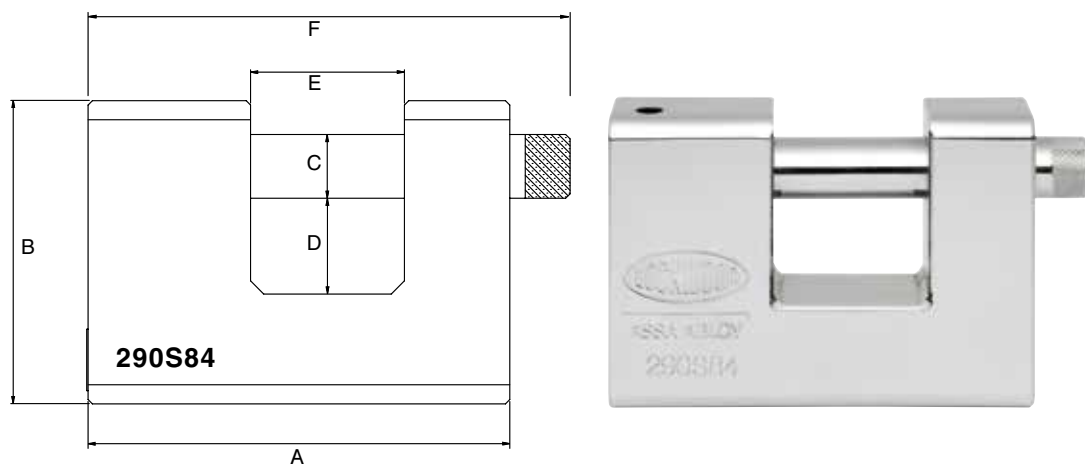


Anti-Corrosion. Corrosion Resistance Rating C4. Environments that are sometimes damp in the majority of rural and suburban localities, including interiors where condensation may occur

Designed and tested to the Australian Padlock Standard AS4145.4 2002 and are rated for both security and corrosion resistance.

# Maximum Security Padlocks

## 290 Series Steel Case Monoblock Padlocks



### Specifications

Part Number	Dimensions (mm)						Physical Security Rating	Corrosion Resistance Rating
	A	B	C	D	E	F		
290S84/120	96	69	14.5	21.8	35	110	SP10	C4

### Available Pack Variations

Part Number	BK	5KA	5KD	6KA	6KD	6MK	D5KA	D5KD	D6KA	D6KD	D6MK	NDP
290S84/120	•	•	•	•	•	•	•	•	•	•	•	•

# Maximum Security Padlocks

## 301 Series Steel Case Padlocks



The Lockwood 301 Series Padlock features a high strength steel shackle designed for maximum security and high corrosion resistance including commercial and industrial applications.

### Features

- Deadlocking double ball locking
- Standard as deadlocking (key retained) function

### Product Details

<b>Case</b>	Heavy duty, solid steel case
<b>Cylinders</b>	301 top loaded cylinder is rekeyable in standard 5 pin with 6 pin capability.
<b>Shackles</b>	Tough high corrosion resistant 11mm chrome molybdenum steel alloy shackle

### Standards and Compliance

#### SP8

Physical Security grades are employed for padlocks. These grades are defined in part by the effective differs and key combinations. Padlocks Physical Security (SP) grade 8

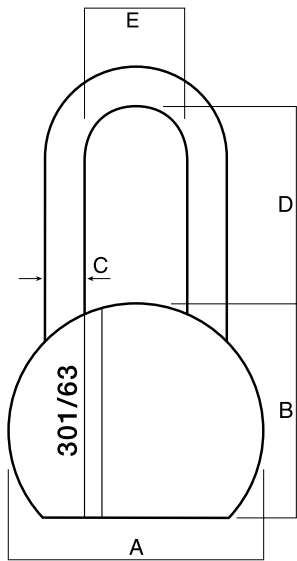


Anti-Corrosion. Corrosion Resistance Rating C3. Environments that are sometimes damp in the majority of rural and suburban localities, including interiors where condensation may occur

Designed and tested to the Australian Padlock Standard AS4145.4 2002 and are rated for both security and corrosion resistance.

# Maximum Security Padlocks

## 301 Series Steel Case Padlocks



### Specifications

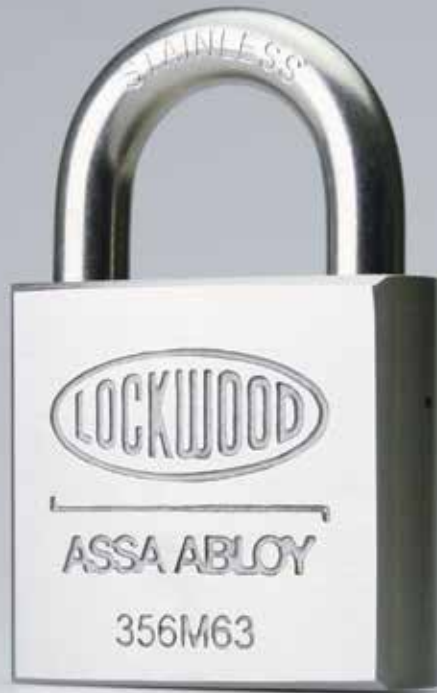
Part Number	Dimensions (mm)					Physical Security Rating	Corrosion Resistance Rating
	A	B	C	D	E		
301/63/154	63	55	11	48	24	SP8	C4

### Available Pack Variations

Part Number	NDP
301/63/154	•

# Maximum Security Padlocks

## 356 Series Steel Case Padlocks



The Lockwood 356 Series Padlocks are a range of padlocks with steel and stainless steel bodies and shackles designed for maximum security and high corrosion resistance including commercial and industrial applications.

### Features

- Double ball locking
- Extended shackle models
- Standard as deadlocking (key retained) function

### Product Details

<b>Case</b>	Heavy duty, solid steel and stainless steel cases
<b>Cylinders</b>	356 top loaded cylinders are rekeyable in standard 5 pin with 6 pin capability (nickel silver keys with 6 pin padlocks). 356 cylinders are preloaded with one length top pins and stainless steel pin springs using a Lockwood 570 barrel.
<b>Shackles</b>	Tough, high corrosion resistant 1mm chrome molybdenum steel alloy and stainless steel shackles

### Standards and Compliance

#### SP8

Physical Security grades are employed for padlocks. These grades are defined in part by the effective differs and key combinations. Padlocks Physical Security (SP) grade 8

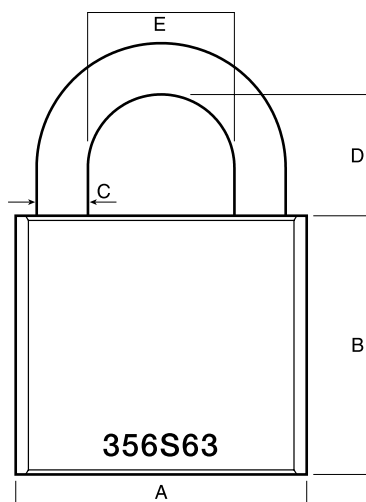


Anti-Corrosion. Corrosion Resistance Rating C5. Environments that are sometimes damp in the majority of rural and suburban localities, including interiors where condensation may occur

Designed and tested to the Australian Padlock Standard AS4145.4 2002 and are rated for both security and corrosion resistance.

# Maximum Security Padlocks

## 356 Series Steel Case Padlocks



### Specifications

#### Dimensions (mm)

Part Number	A	B	C	D	E	Physical Security Rating	Corrosion Resistance Rating
356S63/525	63	56	11	25	32	SP8	C3
356S63/550	63	56	11	50	32	SP8	C5

### Available Pack Variations

Part Number	BK	5KA	5KD	6KA	6KD	6MK	NDP
356S63/525	•	•	•	•	•	•	•
356S63/550	•	•	•	•	•	•	





# Safety Lockout Padlocks

# Safety Lockout Padlocks

## 214 and 215 Series Aluminium Case Padlocks



The Lockwood 214 and 215 Aluminium Series Padlocks are a range of durable, rugged and lightweight 40mm aluminium case padlocks with full commercial grade special keying. The range has been specifically designed to meet the requirements of commercial and industrial applications. Along with a range of eight clearly identified coloured jackets, it is ready to be custom marked to make lock identification easy.

### Features

- Self latching double ball locking
- Can be converted from self latching to dead-locking (key retained) by simply relocating the cam plate pin in the cylinder assembly
- Clearly identified jackets in 8 colours

### Product Details

<b>Case</b>	Heavy duty, aluminium case extrusion
<b>Cylinders</b>	334B top loaded cylinders are rekeyable in standard 5 pin with 6 pin capability (nickel silver keys with 6 pin padlocks). 334B cylinders are preloaded with one length top pins and stainless steel pin springs using a Lockwood 570 barrel.
<b>Shackles</b>	High corrosion resistant 5.0mm (214 model) or 6.4mm (215 model) stainless steel shackle. Extended shackle model

**Note:** Custom marking is available. Pricing and availability on application.

### Standards and Compliance

#### SP3-6

Physical Security grades are employed for padlocks. These grades are defined in part by the effective differs and key combinations. Padlocks Physical Security (SP) grade range from 3-6

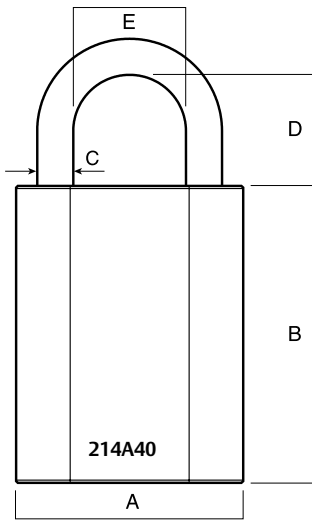


Anti-Corrosion. Corrosion Resistance Rating C4.  
Environments that are sometimes damp in the majority of rural and suburban localities, including interiors where condensation may occur

Designed and tested to the Australian Padlock Standard AS4145.4 2002 and are rated for both security and corrosion resistance.

# Safety Lockout Padlocks

## 214 and 215 Series Aluminium Case Padlocks



### Specifications

#### Dimensions (mm)

Part Number	A	B	C	D	E	Physical Security Rating	Corrosion Resistance Rating
214A40/619	40	52	5.0	19	21	SP4	C4
214A40/650	40	52	5.0	50	21	SP3	C4
215A40/619	40	52	6.4	19	20	SP6	C4
215A40/650	40	52	6.4	50	20	SP5	C4

### Available Pack Variations

Part Number	RKA	BK	5KA	5KD	6KA	6KD	6MK	DRKA	D5KA	D5KD	D6KA	D6KD	D6MK
214A40/619	•	•	•	•	•	•	•	•	•	•	•	•	•
214A40/650	•	•	•	•	•	•	•	•	•	•	•	•	•
215A40/619	•	•	•	•	•	•	•	•	•	•	•	•	•
215A40/650	•	•	•	•	•	•	•	•	•	•	•	•	•

# Safety Lockout Padlocks

## 215P Series Plastic Case Padlocks



The Lockwood 215P Series Plastic Body Padlocks have been specifically designed for the electrical and mining safety lockout industries. When specified with a polymer shackle the padlock becomes completely non-conductive allowing for safety lockout within electrical applications.

### Features

- Excellent corrosion resistance
- All components are non-sparking
- All components are non-magnetic
- Meets OH&S guidelines of one employee, one padlock and one key

### Keying and Cylinders

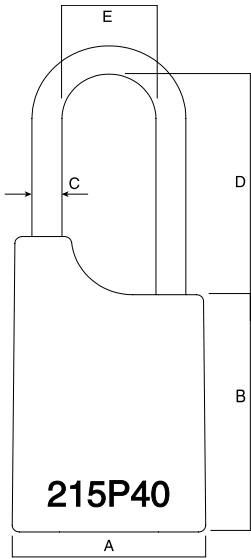
- 6 pin 570 barrel with 334B cylinder housing
- The standard key supplied is restricted E3 profile with no duplication possible as key head is exclusively stamped 'Safety Do Not Copy'
- Bulk locksmith versions are available to allow for keying to existing systems

### Product Details

<b>Case</b>	Available in 6 colours. Includes write on "Danger" label
<b>Shackles</b>	Available in brass, stainless steel and polymer shackles

# Safety Lockout Padlocks

## 215P Series Plastic Case Padlocks



### Specifications

#### Dimensions (mm)

Part Number	A	B	C	D	E
215P40/850	40	52	6	50	20

### Available Pack Variations

Part Number	RKA	6KD	BK
215P40/850	•	•	•
215P40/250	•	•	•
215P40/225	•	•	•

# 255 Series Padlock



The Lockwood 255 Series Padlock is a 40mm zinc diecast padlock with a powdercoated finish.

## Features and Specifications

- Primarily used for keying applications
- Disc tumbler mechanism
- Self latching, single locking mechanism

## Product Details

<b>Case</b>	High purity, diecast, zinc alloy case
<b>Shackles</b>	6.4mm zinc plated hardened steel shackle

**Note:** Standard 003 Fire Industry Lock available in Red - Part No. 225/40/119/003. All other combinations are in Brown.

## Standards and Compliance

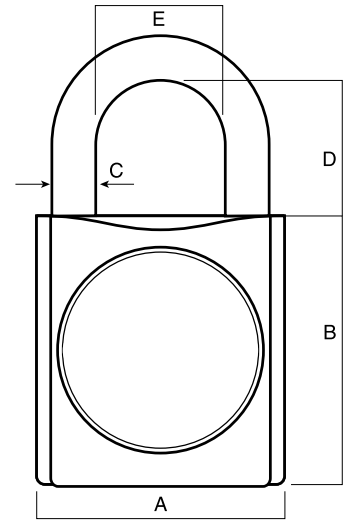
**S3** High security for maximum protection (AS4145.2:1993).

**D3** High durability for maximum frequency usage.



Anti-Corrosion.

# 255 Series Padlock



## Product Details– Dimensions

	A	B	C	D	E
225/40/119	38	38	6.4	19	19.5

## Available Pack Variations

	RKA	LS	KA	KD	E
225/40/119	•	•	•	•	

# 312 Series Padlocks



The Lockwood 312 Series Safety Lockout Padlocks are a durable and rugged 30mm brass padlock that has been specifically designed to meet the requirements of safety lockout applications.

Multiple departments or jobs can be easily identified using one of the jacket options. Laser etching is also optional for individual identification when using the windowed jacket options.

## Features and Specifications

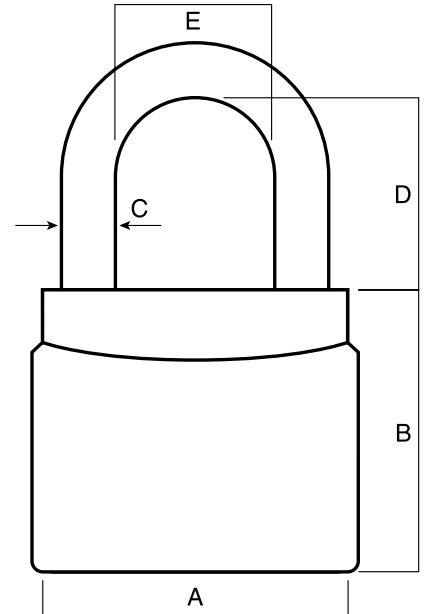
- Primarily used for keying applications
- 6 pin tumbler mechanism
- Self latching or deadlocking (key retained)
- Double locking

## Product Details

<b>Case</b>	Solid brass case extrusion
<b>Shackles</b>	4.8 mm stainless steel shackle. Extended shackle models

**Note:** Custom marking is available. Pricing and availability on application.

# 312 Series Padlocks



## Product Details- Dimensions

	A	B	C	D	E
312##19	29	34	4.8	19	16
312##38	29	34	4.8	38	16
312##50	29	34	4.8	50	16

# 312 Series Safety Lockout Kit - Accessories



The Lockwood Safety Lockout Kit includes all the equipment your personnel require to implement safety lockout procedures.

## Product Details

<b>Carry Case</b>	A robust carry case with a clear face compartment—attaches easily and comfortably to the belt
<b>Padlocks</b>	Four keyed alike Lockwood Safety Lockout Padlocks with 50 mm hardened steel shackles and colour coded covers
<b>Key Ring</b>	Retractable steel line key ring holder with one colour coded cut key
<b>Jaws</b>	Lockout jaws to fit Lockwood Safety Padlocks

# 312 Series Safety Lockout Kit - Accessories

## Padlock Holder for 4 Padlocks

<b>Part Number</b>	312 Holder/4
<b>Finish</b>	Black

The Lockwood 312 Holder/4 has the capacity to hold four 312 Lockwood Padlocks (19 mm – 80 mm shackle), a retractable 312 Keyline and 312 Series Safety Jaws.

The carry case is designed to be easily fitted onto your belt. The 312 Holder also includes a clear face compartment which makes identification easy.

**Note:** Padlocks and Accessories are ordered separately.



## Padlock Holder for 6 Padlocks

<b>Part Number</b>	312 Holder/6
<b>Finish</b>	Black

The Lockwood 312 Holder/6 has the capacity to hold six 312 Lockwood Padlocks (19 mm – 80 mm shackle), a retractable 312 Keyline and the 312 Series Safety Jaws.

The carry case is designed to be easily fitted onto your belt. The 312 Holder also includes a clear face compartment which makes identification easy.

**Note:** Padlocks and Accessories are ordered separately.



## Retractable Key Holder

<b>Part Number</b>	312 Keyline
<b>Finish</b>	Chrome Plate/Black

This compact retractable key holder incorporates a spring loaded mechanism, a robust steel cable line and key ring.

The built in clip allows easy fitting onto the 312 Holder, or can be used independently. The 312 Keyline ensures keys are easily accessible when needed.

**Note:** Padlocks and Accessories are ordered separately.



# 312 Series Safety Lockout Kit - Accessories

## Safety Lockout Jaws

**Part Number** 312 Jaws

The safety lockout jaws ensure that machinery stays 'locked out' until each person removes his/her padlock from the hasp. This prevents any accidental re-energising of machinery before crews have completed their work.

The 312 Jaw holds up to six 312 padlocks and is made from hardened steel with a vinyl coating.

**Note:** Padlocks and Accessories are ordered separately.  
Also available - 38mm version and 7 hole versions



## Lockout Permit to Work Red Board

**Part Number** 312PTW/A

The Lockwood 312PTW/A Lockout Permit to Work Board has been designed to be used when multiple isolations are required. Durable construction from 1.2 mm aluminium and 4 mm clear acrylic sheet.

- Durable construction from 1.2 mm aluminium and 4 mm clear acrylic sheet
- Lightweight and easy to transport—including integral handle
- Clear tough acrylic pocket protects permit or procedure

**Note:** Padlocks and Accessories are ordered separately.



## Available Pack Variations

Item	Description
312Holder/6	312 Holder for 6 Padlocks
312Jaws	312 Lockout Jaws 25mm
312Jaws/38	312 Lockout Jaws 38mm
312Jaws/7	312 Lockout Jaws 7 Holes 25mm
312Keytag1/78	312 Key Tag 1/78
312PTW/A	Permit to Work Board

# 312 Series Safety Lockout Range - Accessories

## Lock Box - 13 Hole Red

**Part Number** 312LB/13

Group Lockout Boxes are used for isolating energy points when a large team is working. Using a group lockout box ensures staff safety by preventing activation of energy points until all maintenance locks have been removed.

Accepts 13 lockout padlocks.



## Lockout Station - 40 Padlock Capacity

**Part Number** 312LOS/40

Conveniently store your most used lockout items close to lockout points. Two padlock rails have capacity for up to 40 lockout padlocks plus two stepped tag holders and a smaller rail for lockout hasps.

Simply add extra stations to increase capacity for larger requirements.



## Adjustable Gate Valve - Large 205mm

**Part Number** 312AGV/205

Easily lockout gate valves of various sizes with this adjustable device. No need to carry multiple sizes of lockout devices.

Adjusts to accommodate a gate valve up to 205mm diameter. Use a lockout hasp when multiple padlocks are required.



# 312 Series Safety Lockout Range - Accessories

## PVC Lockout Tag - Information Do Not Operate

<b>Part Number</b>	312LOT/P1
<b>Finish</b>	Green

The Lockout Tag range allows hazards to be easily identified for a range of industrial applications where safety lockouts of equipment are required. Dedicated colour allows for easy identification of lockout situation.



## PVC Lockout Tag - Exclusive Control

<b>Part Number</b>	312LOT/P2
<b>Finish</b>	Blue

The Lockout Tag range allows hazards to be easily identified for a range of industrial applications where safety lockouts of equipment are required. Dedicated colour allows for easy identification of lockout situation.



## PVC Lockout Tag - Personal Danger Do Not Operate

<b>Part Number</b>	312LOT/P3
<b>Finish</b>	Red

The Lockout Tag range allows hazards to be easily identified for a range of industrial applications where safety lockouts of equipment are required. Dedicated colour allows for easy identification of lockout situation.



## PVC Lockout Tag - Out of Service Do Not Operate

<b>Part Number</b>	312LOT/P4
<b>Finish</b>	Yellow

The Lockout Tag range allows hazards to be easily identified for a range of industrial applications where safety lockouts of equipment are required. Dedicated colour allows for easy identification of lockout situation.



## PVC Lockout Tag - Danger Do Not Operate

<b>Part Number</b>	312LOT/P5
<b>Finish</b>	Orange

The Lockout Tag range allows hazards to be easily identified for a range of industrial applications where safety lockouts of equipment are required. Dedicated colour allows for easy identification of lockout situation.



# Safety Lockout 312HASP



Lockwood's unique patented Safety Lockout Hasp design provides protection for various portable installations suitable for both single and multipoint\* locking applications. This product provides maximum protection when used in conjunction with Lockwood's 312 Series padlocks and ensures equipment can be isolated and not activated again until the repairs or maintenance are completed.

The locked out device cannot be reactivated until all workers have signed off on their portion of the project and removed their padlock from the hasp.

Lockwood's guarantee of quality means that you can be confident in your choice of Lockwood Safety Lockout products.

\*When used in conjunction with 312Cable

## Features and Specifications

- Multi-function Safety Lockout Hasp with the unique design cable locking feature
- Six padlock holes accept up to 5mm shackle diameter
- Multi point locking (when used in conjunction with cable)

## Product Details

<b>Functions</b>	Single action shackle release trigger. Piggy back function
<b>Materials</b>	Hardened Stainless Steel hasp Heavy duty stainless steel return spring Stainless steel body rivets
<b>Latches</b>	Self-latching
<b>Finishes</b>	Highly visible red powder coat finish

# Trailer Air Coupling Lock



The Lockwood Trailer Air Coupling Lock has been designed for the securing of Truck (Trailer) and industrial airlines applications. When attached to the airline this product provides Security and Safety.

**Security:** Whereby the air brakes airline fitting is effectively sealed when the lock is attached, preventing connection to the opposing fitting. In the case of a Trailer application this reduces the risk of the trailer being connected to a truck when not authorised.

**Safety:** In an industrial application, the sealing of the airline can reduce the risk of accidental connection of equipment when shut down for maintenance etc.

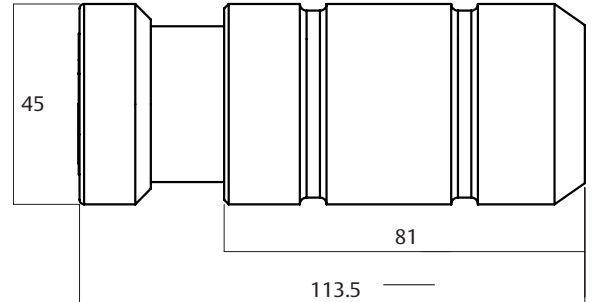
## Product Details

<b>Dimensions</b>	Diameter: 45mm
	Assembled Length: 63 Series - 95mm 81 Series - 113mm
<b>Materials</b>	Inner Sleeve: Mild Steel Outer Sleeve: Case hardened mild steel
<b>Fixings</b>	Spring loaded function, allowing for quick snap-on attachment to ½ inch male air coupling fittings.
<b>Cylinder</b>	6 pin, 5 pin, Lockwood inline keying systems, Status 6, Gen 6, MT5, Abloy. Other options by application. Integrated 6 pin inline (pre-loaded) cylinder included in Bulk pack model
<b>Serviceability</b>	Replace, rekey cylinder

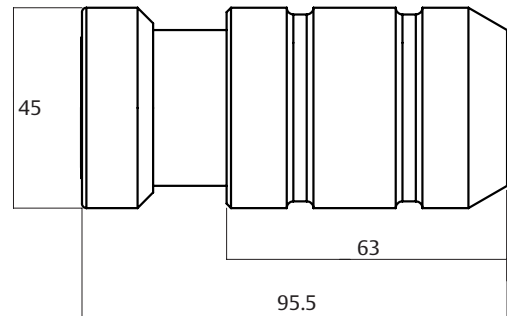
# Trailer Air Coupling Lock

Part Number	Description	CP	SC
AL1/2/63MMKA	Trailer Airlock 1/2in 63mm - Keyed alike	✓	
AL1/2/63MMKD	Trailer Airlock 1/2in 63mm - Keyed to differ	✓	
AL1/2/81MMBK	Trailer Airlock 1/2in 81mm - Bulk	✓	
AL1/2/81MMG6M	Trailer Airlock 1/2in 81mm - GEN 6	✓	
AL1/2/81MMKA	Trailer Airlock 1/2in 81mm - Keyed alike	✓	
AL1/2/81MMKD	Trailer Airlock 1/2in 81mm - Keyed to differ	✓	
TL1/2IN	Trailer lock 1/2in - Padlock required	✓	
TL28MM	Trailer lock 28mm - Padlock required	✓	
AL1/2/MT5SC	Trailer Airlock MT5 Cylinder kit		✓

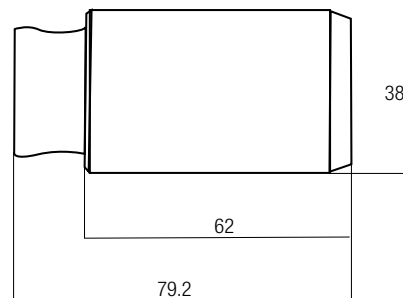
## 81 Series



## 63 Series



## 28mm Trailer Lock



# Safety Lockout Padlocks

## Ordering Procedure

### Padlock Configuration Matrix (for Reference Only)

Sample part number 312BD19E1RWKD is made up of several sections. Choose your product by selecting an option from each section.

### Padlocks Ordering Procedure

Padlock Series	Profile	Function	Shackle Material	Etching	Jacket Colour	Keying
312	B	D	19	E1	RW	KD

Padlock Series		Function	Etching	Keying
Safety Lockout	312	Deadlatching (key retained when unlocked)	Single Sided E1	Keyed to Differ KD
<b>Profile</b>		Latching L	Double Sided E2	Keyed Alike KA
ALR	A	<b>Shackle</b>		Locksmith LS
32R	B	19mm 19	Master Keyed MK	
CNR	C	38mm 38		
32S*	E	50mm 50		
		<b>Jacket Colour</b>		
		Red Solid Jacket RD		
		Red Window Jacket RW		
		Orange Window Jacket OR		
		Yellow Window Jacket YE		
		Green Window Jacket GR		
		Blue Window Jacket BL		
		Purple Window Jacket PU		
		White Window Jacket WH		
		Black Solid Jacket BK		
		Black Window Jacket BW		
		Grey Window Jacket GY		
		Red Windowed Jacket with "Danger Do Not Operate" DD		
		Black and Yellow Stripe Window Jacket ST		

**NOTE:** 312E Series is a replacement for the old style 232 padlock with the 232 standard key profile.

When ordering MK padlocks please specify the keying details.

Part number convention if for reference only.

### Padlock Configuration Matrix (for Reference Only)

Sample part number 215A40/619/BK is made up of several sections. Choose your product by selecting an option from each section.

### Padlocks Ordering Procedure

Padlock Series	Case Config.	Case	Shackle Material	Shackle Opening	PackType & Keying
215	A	40	6	19	5KD

Padlock Series		Function	Shackle Opening	
Contact	225	Nominal Size in mm	Nominal Size in mm	
Contact	214	<b>Shackle</b>		
Contact	215	Brass 5	<b>Pack Types and Keying</b>	
<b>Case Configuration</b>		Stainless Steel 6	Keyed Alike KA	
Aluminium	A	Polymer 8	5 Pin Keyed Alike 5KA	
Plastic	P	5 Pin Keyed to Differ 5KD		
Steel	S	6 Pin Keyed Alike 6KA		
Zinc	Z	6 Pin Keyed to Differ 6KD		
		6 Pin Master Keyed 6MK		
		Bulk BK		
		Bulk (Deadlocking) DBK		
		Locksmith LS		



# Padlock Accessories

# Padbolt



Lockwood Padbolts are designed for both barrier and deterrent applications.

### Features and Specifications

- Hardened steel shackle cover for added strength
- High cut resistant hardened steel construction
- Tamper resistant fasteners included
- 12.5mm bolt diameter

### Security

Security Rating 7

Corrosion Rating 3

The security rating was achieved using the fasteners supplied in the pack. The use of fasteners other than those supplied may affect the security of this product.

### Pack Variations

Available in display pack only.

### Choosing the Right Padlock

For the best results it is recommended that a Lockwood padlock with the same security rating as the accessory is selected.

When the padlock and accessory are combined the lower of the two respective ratings will apply.

### Product Details

<b>Functions</b>	Durable hardened steel
<b>Materials</b>	Corrosion resistant black coating

### Standards and Compliance

**SP7**

Physical Security grades are employed for padlocks. These grades are defined in part by the effective differs and key combinations. Padlocks Physical Security (SP) grade 7



Anti-Corrosion. Corrosion Resistance Rating C3. Environments that are sometimes damp in the majority of rural and suburban localities, including interiors where condensation may occur

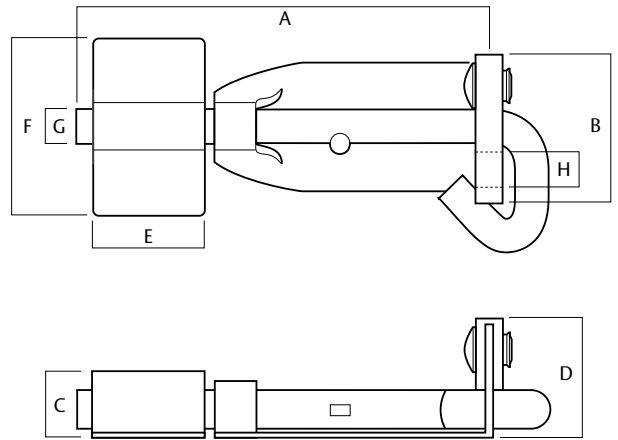
Designed and tested to the Australian Padlock Standard AS4145.4 2002 and are rated for both security and corrosion resistance.

# Padbolt

Part Number	Description
PA/33/200/DP	200mm long heavy duty

## Product Details – Dimensions

	A	B	C	D	E	F	G	H	Security Rating	Corrosion Resistance Rating
PA/33/200/DP	200	52	20	38	40	63	12.5	11	7	3



# Locking Plates



Lockwood Locking Plates are designed for surface mounting and side mounting where general purpose security is required.

## Features and Specifications

- High cut resistant hardened steel construction
- Bolt through fixing for added strength and security on surface mounted plates
- Tamper resistant concealed fixing on side mounted plates
- All fasteners included

## Security

Security Rating 5 and 6

Corrosion Rating 3

The security rating was achieved using the fasteners supplied in the pack. The use of fasteners other than those supplied may affect the security of this product.

## Pack Variations

Available in display pack only.

## Choosing the Right Padlock

For the best results it is recommended that a Lockwood padlock with the same security rating as the accessory is selected.

When the padlock and accessory are combined the lower of the two respective ratings will apply.

## Product Details

<b>Functions</b>	Durable hardened steel
<b>Materials</b>	Corrosion resistant black coating

## Standards and Compliance

**SP5/6**

Physical Security grades are employed for padlocks. These grades are defined in part by the effective differs and key combinations. Padlocks Physical Security (SP) Grade 5 for PA/14/70/DP & (SP) Grade 6 for PA/13/70/DP



Anti-Corrosion. Corrosion Resistance Rating C3. Environments that are sometimes damp in the majority of rural and suburban localities, including interiors where condensation may occur

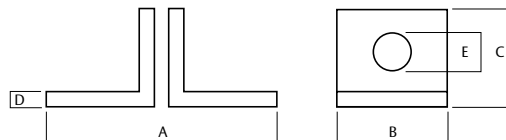
Designed and tested to the Australian Padlock Standard AS4145.4 2002 and are rated for both security and corrosion resistance.

# Locking Plates

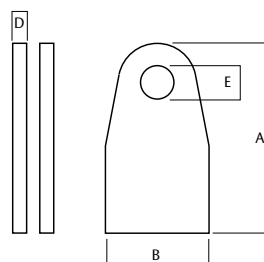
Part Number	Description
PA/13/70/DP	For non-handed, surface mounted applications
PA/14/70/DP	For non-handed, side mounted applications

## Product Details – Dimensions

	A	B	C	D	E	Security Rating	Corrosion Resistance Rating
PA/13/70/DP	75	40	34	5	13	6	3
PA/14/70/DP	75	35	N/A	5	12	5	3



PA/13/70/DP



PA/14/70/DP

# Locking Plates with Shackle Guard



Lockwood Locking Plates with Shackle Guard are designed for surface mounting where high security is required.

## Features and Specifications

- Hardened steel shackle guard
- High cut resistant hardened steel construction
- Bolt through fixing for added strength and security
- High tensile 6mm coach bolts, nuts and washers included

## Security

Security Rating 7

Corrosion Rating 3

The security rating was achieved using the fasteners supplied in the pack. The use of fasteners other than those supplied may affect the security of this product.

## Pack Variations

Available in display pack only.

## Choosing the Right Padlock

For the best results it is recommended that a Lockwood padlock with the same security rating as the accessory is selected.

When the padlock and accessory are combined the lower of the two respective ratings will apply.

## Product Details

<b>Functions</b>	Durable hardened steel
<b>Materials</b>	Corrosion resistant black coating

## Standards and Compliance

**SP7**

Physical Security grades are employed for padlocks. These grades are defined in part by the effective differs and key combinations. Padlocks Physical Security (SP) grade 7



Anti-Corrosion. Corrosion Resistance Rating C3. Environments that are sometimes damp in the majority of rural and suburban localities, including interiors where condensation may occur

Designed and tested to the Australian Padlock Standard AS4145.4 2002 and are rated for both security and corrosion resistance.

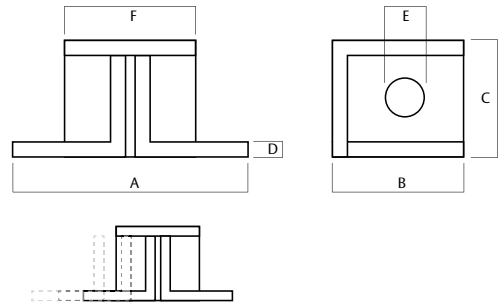
# Locking Plates with Shackle Guard

Part Number	Description
PA/11/70/DP	For applications with hinges on the right and opening toward installer (LH).
PA/12/70/DP	For applications with hinges on the left and opening toward installer (RH).

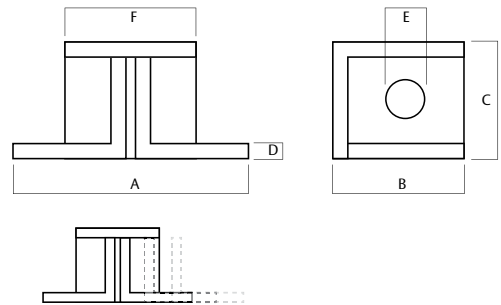
## Product Details – Dimensions

	A	B	C	D	E	F	Security Rating	Corrosion Resistance Rating
PA/11/70/DP	70	40	39	5	13	50	7	3
PA/12/70/DP	70	40	39	5	13	50	7	3

PA/11/70/DP



PA/12/70/DP



# Hasp and Staples



Lockwood Hasp and Staples are designed for both barrier and deterrent applications.

## Features and Specifications

- High cut resistant hardened steel construction with strengthening ribs and rolled edges for added protection
- Tamper resistant concealed fixing
- All fasteners included

## Security

Security Rating 3 and 5

Corrosion Rating 3

The security rating was achieved using the fasteners supplied in the pack. The use of fasteners other than those supplied may affect the security of this product.

## Pack Variations

Available in display pack only.

## Choosing the Right Padlock

For the best results it is recommended that a Lockwood padlock with the same security rating as the accessory is selected.

When the padlock and accessory are combined the lower of the two respective ratings will apply.

## Product Details

<b>Functions</b>	Durable hardened steel
<b>Materials</b>	Corrosion resistant black coating

## Standards and Compliance

### SP3/5

Physical Security grades are employed for padlocks. These grades are defined in part by the effective differs and key combinations. Padlocks Physical Security (SP) Grade 3 for PA/21/90/DP & (SP) Grade 5 for PA/21/120/DP



Anti-Corrosion. Corrosion Resistance Rating C3. Environments that are sometimes damp in the majority of rural and suburban localities, including interiors where condensation may occur

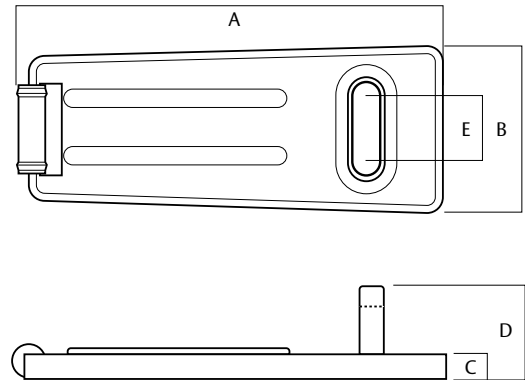
Designed and tested to the Australian Padlock Standard AS4145.4 2002 and are rated for both security and corrosion resistance

# Hasp and Staples

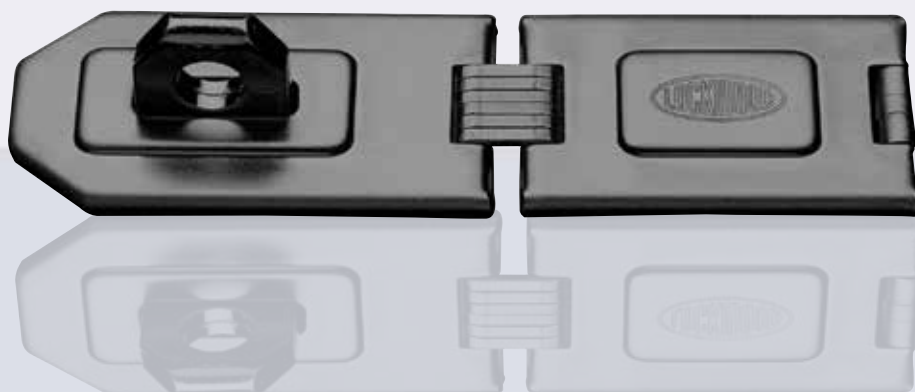
Part Number	Description
PA/21/90/DP	90mm long Hasp and Staple
PA/21/120/DP	120mm long Hasp and Staple

## Product Details – Dimensions

	A	B	C	D	E	Security Rating	Corrosion Resistance Rating
PA/21/90/DP	90	37	6.5	23	10	3	3
PA/21/120/DP	120	45	7.5	28.5	12	5	3



# Hasp and Staples - Hinged



Lockwood Hinged Hasp and Staples are designed for general purpose security applications.

## Features and Specifications

- Double hinged design for added flexibility
- High cut resistant hardened steel construction with strengthening ribs and rolled edges for added protection
- Tamper resistant concealed fixing
- All fasteners included

## Security

Security Rating 6

Corrosion Rating 3

The security rating was achieved using the fasteners supplied in the pack. The use of fasteners other than those supplied may affect the security of this product.

## Pack Variations

Available in display pack only.

## Choosing the Right Padlock

For the best results it is recommended that a Lockwood padlock with the same security rating as the accessory is selected.

When the padlock and accessory are combined the lower of the two respective ratings will apply.

## Product Details

<b>Functions</b>	Durable hardened steel
<b>Materials</b>	Corrosion resistant black coating

## Standards and Compliance

**SP6**

Physical Security grades are employed for padlocks. These grades are defined in part by the effective differs and key combinations. Padlocks Physical Security (SP) Grade 6



Anti-Corrosion. Corrosion Resistance Rating C3. Environments that are sometimes damp in the majority of rural and suburban localities, including interiors where condensation may occur

Designed and tested to the Australian Padlock Standard AS4145.4 2002 and are rated for both security and corrosion resistance

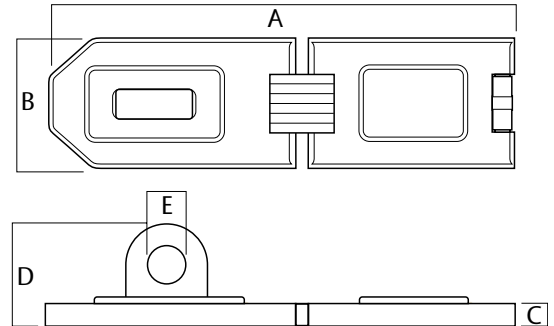
# Hasp and Staples - Hinged

## Part Number Description

**A/23/160/DP** 160mm long Hinged Hasp and Staple

## Product Details – Dimensions

	A	B	C	D	E	Security Rating	Corrosion Resistance Rating
<b>PA/23/160/DP</b>	160	46	9	31	12.5	6	3



# Hasp and Staples – Heavy Duty



Lockwood Heavy Duty Hasp and Staples are designed for high security applications.

## Features and Specifications

- High cut resistant hardened steel construction
- Bolt through tamper resistant concealed fixing for added strength and security
- All fasteners included

## Security

Security Rating 7

Corrosion Rating 3

The security rating was achieved using the fasteners supplied in the pack. The use of fasteners other than those supplied may affect the security of this product.

## Pack Variations

Available in display pack only.

## Choosing the Right Padlock

For the best results it is recommended that a Lockwood padlock with the same security rating as the accessory is selected.

When the padlock and accessory are combined the lower of the two respective ratings will apply.

## Product Details

<b>Functions</b>	Durable hardened steel
<b>Materials</b>	Corrosion resistant black coating

## Standards and Compliance

**SP7**

Physical Security grades are employed for padlocks. These grades are defined in part by the effective differs and key combinations. Padlocks Physical Security (SP) grade 7



Anti-Corrosion. Corrosion Resistance Rating C3. Environments that are sometimes damp in the majority of rural and suburban localities, including interiors where condensation may occur

Designed and tested to the Australian Padlock Standard AS4145.4 2002 and are rated for both security and corrosion resistance.

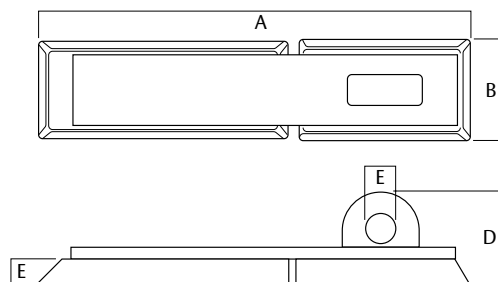
# Hasp and Staples – Heavy Duty

## Part Number Description

**PA/21/190/DP** 190mm long Heavy Duty Hasp and Staple

## Product Details – Dimensions

	A	B	C	D	E	Security Rating	Corrosion Resistance Rating
<b>PA/21/190/DP</b>	190	44	9.5	40	14	7	3



# Hasp and Staples – Pivoting



Lockwood Pivoting Hasp and Staples are designed for high security applications.

## Features and Specifications

- Pivoting hasp design for added flexibility
- High cut resistant hardened steel construction
- Bolt through tamper resistant concealed for added strength and security
- All fasteners included

## Security

Security Rating 7

Corrosion Rating 3

The security rating was achieved using the fasteners supplied in the pack. The use of fasteners other than those supplied may affect the security of this product.

## Pack Variations

Available in display pack only.

## Choosing the Right Padlock

For the best results it is recommended that a Lockwood padlock with the same security rating as the accessory is selected.

When the padlock and accessory are combined the lower of the two respective ratings will apply.

## Product Details

<b>Functions</b>	Durable hardened steel
<b>Materials</b>	Corrosion resistant black coating

## Standards and Compliance

**SP7**

Physical Security grades are employed for padlocks. These grades are defined in part by the effective differs and key combinations. Padlocks Physical Security (SP) grade 7



Anti-Corrosion. Corrosion Resistance Rating C3. Environments that are sometimes damp in the majority of rural and suburban localities, including interiors where condensation may occur

Designed and tested to the Australian Padlock Standard AS4145.4 2002 and are rated for both security and corrosion resistance.

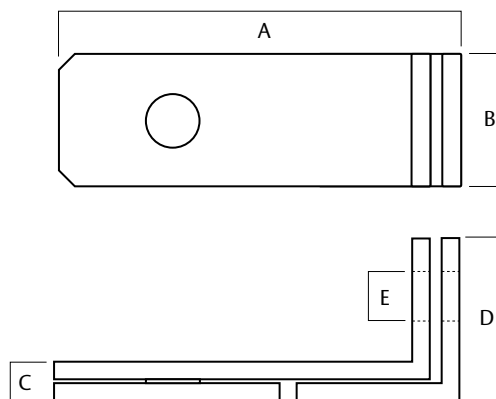
# Hasp and Staples – Pivoting

## Part Number Description

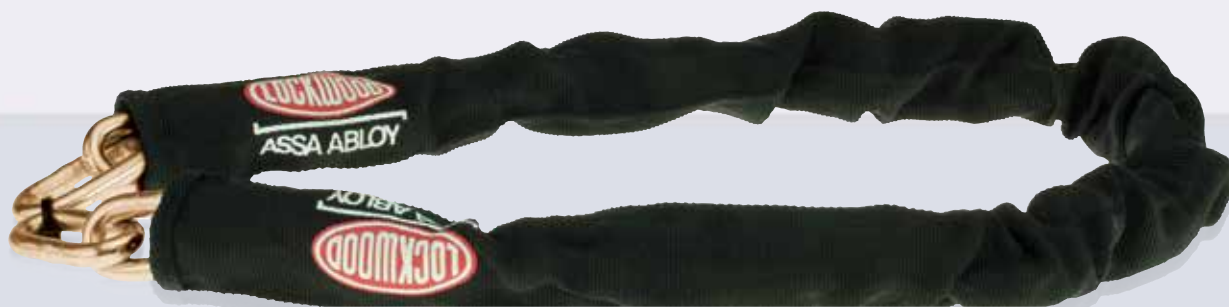
**PA/25/105/DP** 105mm long Pivoting Hasp and Staple

## Product Details – Dimensions

	A	B	C	D	E	Security Rating	Corrosion Resistance Rating
<b>PA/25/105/DP</b>	105	35	11	42	12	7	3



# Padlock Chain



Lockwood Chains are designed for both general purpose and maximum security applications.

## Features and Specifications

- Hardened manganese alloy steel chain for added strength
- High cut resistant hardened steel construction
- Accepts up to 12.5mm padlock shackle diameter
- Tough fabric sleeve, shields the chain from the elements while reducing the chance of scratching
- 900mm in length

## Security

Security Rating 7

Corrosion Rating 3

## Pack Variations

Available in display pack only.

## Choosing the Right Padlock

For the best results it is recommended that a Lockwood padlock with the same security rating as the accessory is selected.

When the padlock and accessory are combined the lower of the two respective ratings will apply.

## Product Details

**Functions** Hardened manganese alloy steel

**Materials** High cut resistant hardened steel

## Standards and Compliance

**SP7**

Physical Security grades are employed for padlocks. These grades are defined in part by the effective differs and key combinations. Padlocks Physical Security (SP) grade 7



Anti-Corrosion. Corrosion Resistance Rating C3. Environments that are sometimes damp in the majority of rural and suburban localities, including interiors where condensation may occur

Designed and tested to the Australian Padlock Standard AS4145.4 2002 and are rated for both security and corrosion resistance.

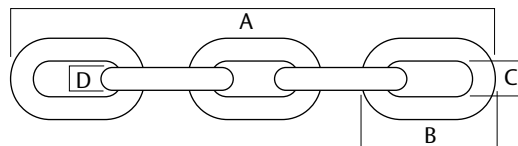
# Padlock Chain

Part Number	Description
-------------	-------------

LCHL1/8/90/F	Hardened steel 900mm chain with fabric cover
--------------	--

Product Details – Dimensions						
	A	B	C	D	Security Rating	Corrosion Resistance Rating

LCHL1/8/90/F	900	52	13	8	7	3
--------------	-----	----	----	---	---	---







**ASSA ABLOY**

Lockwood is the leading brand in the Australian locking industry. With an established reputation for high quality products, this iconic brand provides a wide range of locking solutions to residential housing, commercial building and industrial application markets. Lockwood is supported by an extensive distribution and after-sales support network. Our customers include retailers, architects, trade and industrial personnel, locksmiths and security dealers.

ASSA ABLOY is the global leader in door opening solutions, dedicated to satisfying end-user needs for security, safety and convenience.

ASSA ABLOY is represented in all major regions, in both mature and emerging markets, with leading positions in Australia, Europe and North America.

**25YEAR  
MECHANICAL  
WARRANTY**

#### The Lockwood 25 Year Mechanical Warranty

Our belief that we manufacture the finest premium products available in today's market place is backed by the Lockwood 25 Year Mechanical Warranty, ensuring that Lockwood continues to keep Australians safe by delivering security and peace of mind.

For warranty terms and conditions, please visit [www.lockweb.com.au](http://www.lockweb.com.au) or call 1300WARRANTY

**ASSA ABLOY Australia Pty Ltd**  
235 Huntingdale Road  
Oakleigh, Victoria, 3166  
Australia

**1300 LOCK UP (1300 562 587)**  
[lockweb.com.au](http://lockweb.com.au)

**ASSA ABLOY New Zealand Ltd**  
6 Armstrong Road  
Albany, Auckland, 0632  
New Zealand

[info.nz@assaabloy.com](mailto:info.nz@assaabloy.com)  
Telephone +64 9415 7111  
[assaabloy.co.nz](http://assaabloy.co.nz)

#### Disclaimer

Whilst every effort has been made to ensure that the information (including product images and drawings) contained in this brochure is accurate at the time of publication, ASSA ABLOY Australia Pty Limited ("ASSA ABLOY") recommends that you consult ASSA ABLOY or its agents prior to placing an order to ascertain current information on specific products, as ASSA ABLOY reserves the right to make changes without notice. ASSA ABLOY will not be liable for any injury, loss or damage whatsoever, arising from any errors or omissions in the information contained in the brochure or arising from the use or application of the information contained herein. © 2016 copyright by ASSA ABLOY All rights reserved

