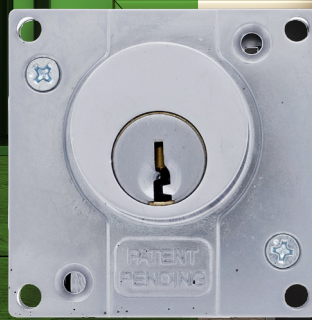


The advertisement features a top section with a green background on the left and a dark background on the right. The Carbine logo is in the top left, followed by the product name 'Cupboard Locks'. Two views of the lock are shown: a front view and a side view with a key inserted. Below this is a main heading and a descriptive paragraph. A 'Features' section follows, with two columns of bullet points. The bottom section is titled 'Glass door kit' and includes another set of features and contact information. The bottom right corner contains the company name and contact details.

**CARBINE**

CARBINE

# Cupboard Locks

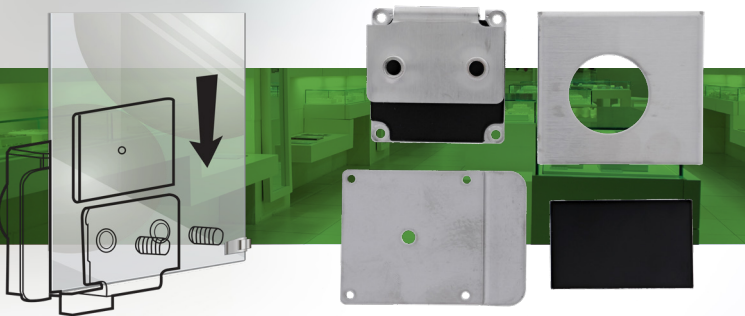


## Modular locks with changeable latch & bolt and a four-way locking direction.

Carbine Cupboard Locks simplify design so you only need one lock for all cupboard and drawer locking applications. Carbine Cupboard Locks are completely modular with a changeable latch & bolt and a four-way locking direction. The Carbine Cupboard Lock is a next generation product, providing you with one lock to suit all applications for cupboard and drawer locking. The product is completely modular with a changeable function (from latch to bolt and vice versa) and four possible locking directions. With this sort of versatility there is little reason to use anything else.

### Features:

- + Easy to remove the cylinder by undoing three screws
- + Can be purchased in keyed-to-differ or keyed-alike
- + Supplied with a 6 pin C4 keyway, use Keyline LKW9 (Silca LW5) key and offers keying advantages (rekeying to other locks)
- + Supplied with an additional cam for key retaining function
- + Heavy-duty construction
- + High corrosion resistance
- + Retrofits most common brands
- + 30mm lock housing projection, 12mm lock case
- + Uses a standard 530 cylinder



## Glass door kit.

The CCL-GD1 glass door kit for the Carbine CCL-1 cupboard lock.

### Features:

- + Suitable for single & double door glass cabinets
- + Double glass doors must have the double door plate installed
- + Utilises a Carbine Cupboard lock with all its functions
- + Utilises a 530 cylinder
- + Can accept restricted systems
- + Can be installed onto 4mm to 8mm glass thickness
- + Made from high quality brush stainless steel
- + Can be installed on left & right hand opening doors
- + Can be used to secure the door at the bottom or the top
- + Simple to install, especially with the easy to handle back plate

### WESTLOCK SECURITY

3/91 LEACH HWY, KEWDALE, WA, 6105  
(08) 9353 2889  
westlock@westlock.com.au  
<https://westlock.com.au>